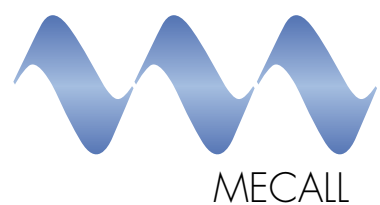




EIDOS RF439

Multifunctional DRF
remote-controlled system

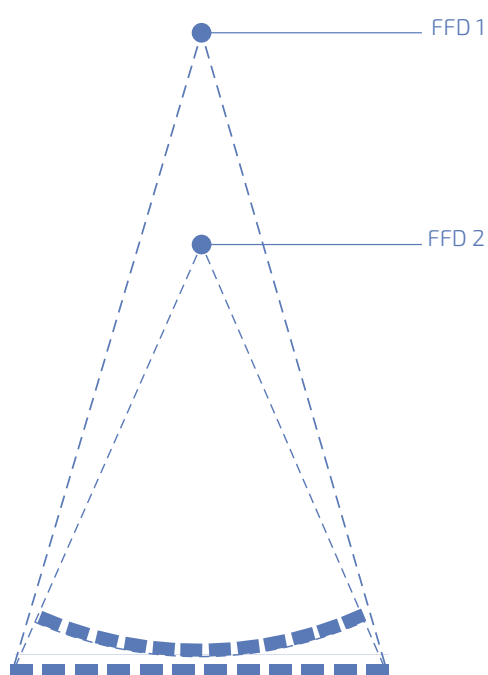


ACCESSIBILITY

The accessibility offered by EIDOS RF439 ensures the complete direct contact towards the patient, without any mechanical barrier between the operator and the patient.

The structural design of the system simplifies transferring patients from and onto stretchers ensuring an immediate intervention also in emergency applications.





EIDOS RF439 provides the most sophisticated technical solutions to optimize image quality and ensure consistent dose reduction.

- Pixium RF4343 flat panel detector, 43x43 cm useful area; HighDQE and 3.4 $\mu\text{l}/\text{mm}$ spatial resolution
- Image processor configured for 16 bit acquisition and processing
- Removable carbon fiber grid with autofocusing device
- Powerful anatomical program allowing the operator to set optimized exposure values, beam filters, size of the irradiated area and specific algorithm for image processing in real time.
- Integrated AEC device to combine a predefined dose value with every single anatomical program
- Integrated DAP system with automatic patient dosimetry management
- Single end suspended-carbon fiber tabletop with maximum patient weight up to 250 kg.

- 90°/90° tilting movement independent from the elevation movement.
- Single end suspended-carbon fiber tabletop that, in the horizontal position, can be lowered to a distance from the floor of only 50 cm.
- With the table in the vertical position, the centre of the detector can be positioned at only 49.5 cm from the floor and the X-ray tube can be positioned at only 33 cm from the floor.



TECHNOLOGY FOR HIGH PERFORMANCES



FLEXIBILITY

The SID can be stepless adjusted from 115 to 180 cm for the best execution of chest exposures also in RF modality.

Remarkable travel of the X-ray tube/detector group providing the patient full-length coverage up to 205 cm in both vertical and horizontal positions.

The patient footrest can be freely positioned all along the tabletop.



CONTROL CONSOLE

The intuitive console gathers all the controls of the generator, imaging system and of the table movements.



ERGONOMICS

The console on the examination table and the touch screen on the collimator allow the operator to control the system movements and manage the collimator functions.

The system movements can also be controlled by a special Bluetooth mobile device.



UTMOST VERSATILITY

EIDOS RF439 ensures the quick and accurate execution of X-ray exams in continuous and pulsed fluoroscopy, radiography, tomography, tomosynthesis, digital subtractive angiography, stitching of the column and lower limbs.

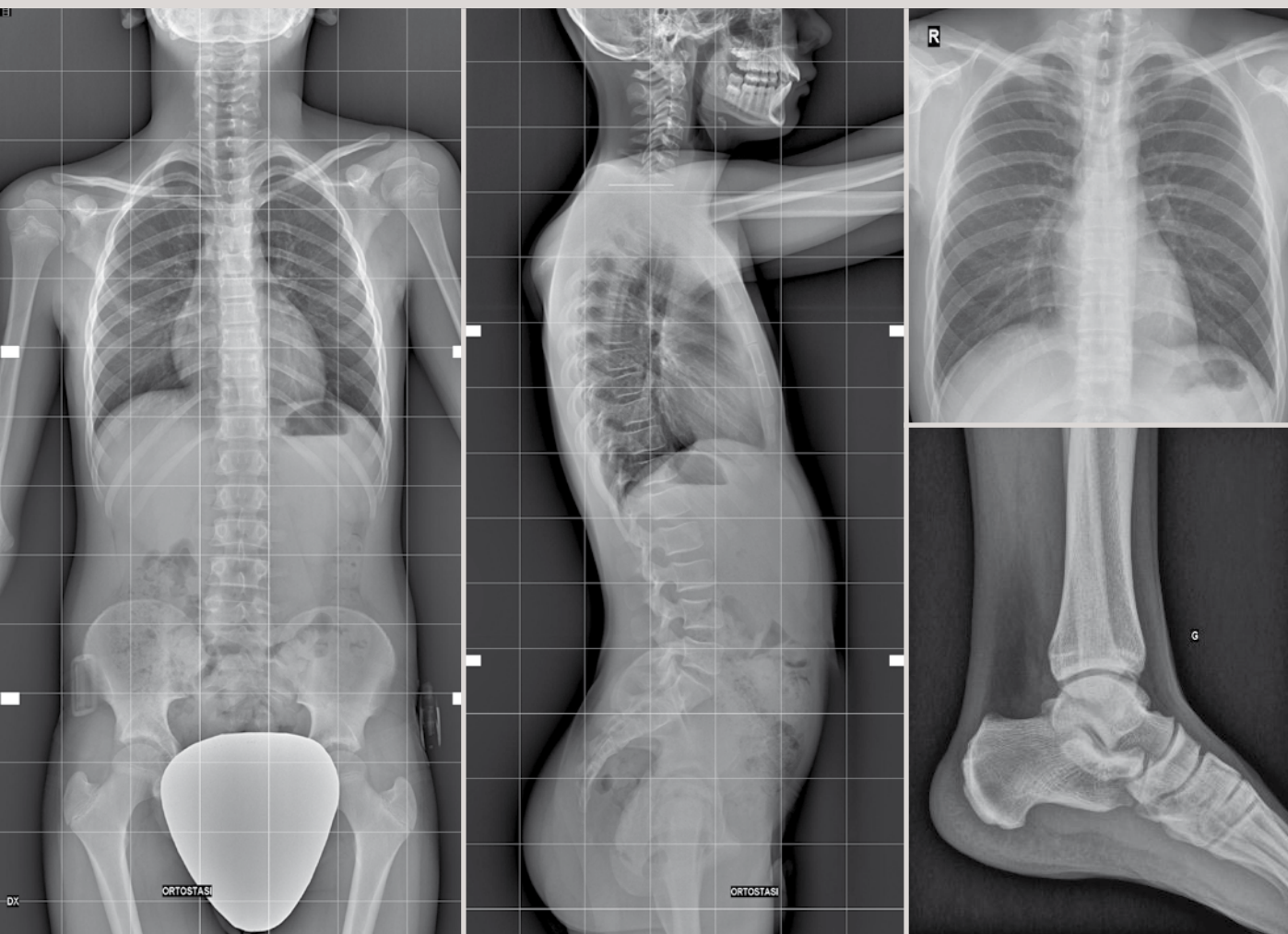


DEFINITE DIAGNOSIS IN ANY APPLICATION

- Skeletal system
- Thorax and lungs
- Gastroenterology
- Urology and gynaecology
- Paediatrics
- Angiography
- Tomography
- Tomosynthesis
- Stitching



UNRIVALLED IMAGE QUALITY



STITCHING

Image reconstruction providing for grid overlay

Images acquired and processed
with matrix up to
2880x2880 pixel x 16 bit

GET IN TOUCH

GENERAL MEDICAL MERATE SPA
Via Partigiani, 25
24068 SERIATE (BG) - Italy

Phone +39 035 45 25 311
Fax +39 035 29 77 87
info@gmmspa.com



GMM
GROUP

www.gmmspa.com